



Machine Tools

USED XYZ SMX2000

Milling - CNC Knee type Turret

Stock No. 2505008216U

Machine Specifications

Horizontal / Vertical / Universal	Vertical knee
Control + No Of Axis	Prototrak SMX 2 - axis
X/Y/Z Travel	813 x 431 x 406mm
Table Size	1270 x 254mm
Spindle Taper	R8
Spindle Speeds	70 - 3600 rpm (Variable Speed)
Feeds	Power Longitudinal
Power Capacity	415v/3ph/50hz











XYZ

Machine Tools

XYZ Machine Tools Ltd



Model

SMX 2000

Serial No

11481

Year of Manufacture

2011

Weight

1250 KG

Main Voltage

400 V

Phase

3

Cycle

50 Hz

Control Voltage

24 V

Max RPM

4200 RPM

THIS MAY BE FURTHER REDUCED BY EQUIPMENT FITTED

Main Motor

2.25 KW

Amps

6 A

Other Equipment Amps

4.0 A

Pneumatics

6 Bar 2.2 L/Min

Fuse

16 A

Tel: 01823 674200

International +44 (0) 1823 674200

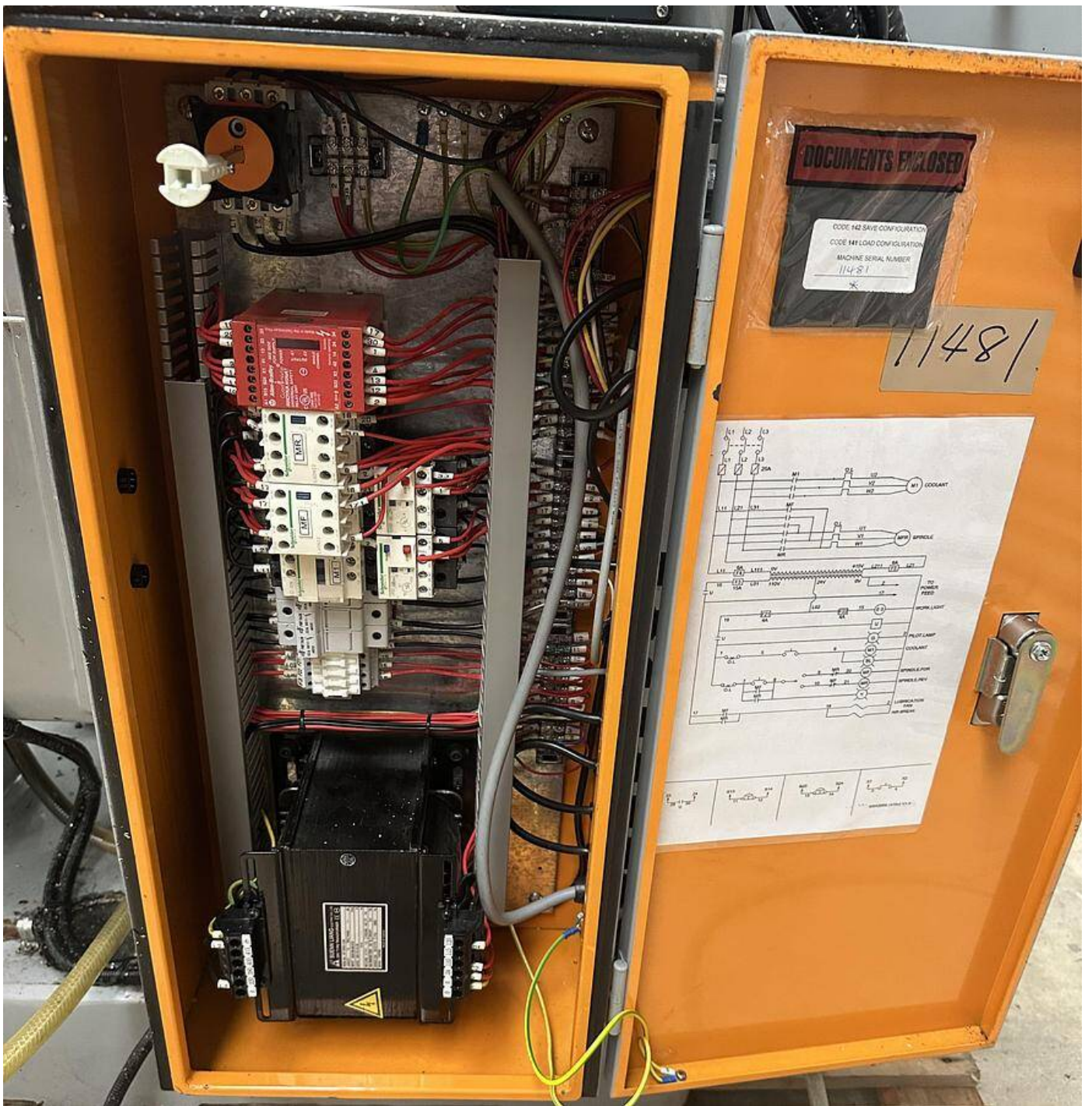
www.xyzmachinetools.com

Fax: 01823 674201

International +44 (0) 1823 674201

email: sales@xyzmachinetools.com

XYZ Machine Tools Ltd. Woodlands Business Park, Burlescombe, Tiverton, Devon, EX16 7LL UK



DOCUMENTS ENCLOSED

CODE 142 SAVE CONFIGURATION
CODE 148 LOAD CONFIGURATION
MACHINE SERIAL NUMBER
114-51
*

11481

